

Chapter 4 ESIRWM Governance, Coordination and Outreach

4.1 Governance

The Governance Structure described in this document provides the basis for relationships within and procedures for governance of the East Stanislaus Integrated Regional Water Management (ESIRWM) planning region. The governance structure helps facilitate sustained regional water management and the associated IRWM processes, both now and into the future. The East Stanislaus IRWM region is inclusive and utilizes a collaborative, multi-stakeholder process that provides mechanisms to address water management issues and develop integrated multi-benefit regional solutions that incorporate environmental stewardship to implement future IRWM plans. Regardless of a person's or entity's ability to contribute financially to the East Stanislaus IRWM planning process, the ESRWMP engages them through public outreach and stakeholder processes as described in Chapter 4.3, Public Forums of this Integrated Regional Water Management Plan (IRWMP).

4.1.1 Organization

The primary groups composing the East Stanislaus IRWM Region governance structure include the **East Stanislaus Regional Water Management Partnership (ESRWMP)**, the official Regional Water Management Group, plus the Steering Committee (SC), the Public Advisory Committee (PAC), and the general public. In the future, additional committees or sub-committees may be formed as the need arises.

Members of the ESRWMP are a mix of elected officials, board of director members, and other representatives from the four ESRWMP member agencies (Cities of Modesto, Hughson, Ceres, and Turlock). According to California Water Code (CWC) §10539, a Regional Water Management Group (RWMG) is a "group in which three or more local agencies, at least two of which have statutory authority over water supply or water management, as well as those other persons who may be necessary for the development and implementation of a plan that meets the requirements of CWC §10540 and §10541, participate by means of a joint powers agreement, Memorandum of Understanding (MOU), or other written agreement, as appropriate, that is approved by the governing bodies of those local agencies." For the ESIRWM region, all four entities have statutory authority over water supply or management in their respective jurisdictions, and all ESRWMP members signed an MOU dated August 23, 2011 (included in Appendix A) which formally formed the ESRWMP. Additional members can be added to the ESRWMP with approval of existing members and signing of the MOU. One representative from each MOU signatory participates on the ESRWMP; each MOU signatory has also designated one alternate such that at every ESRWMP meeting, there will be a representative for each member. A list of the ESRWMP representatives and alternates for each City are shown in Table 4-1 and are detailed in Appendix B. A more detailed description of the ESRWMP is included in Chapter 4.1.2, RWMG Composition.

The Governance section of the IRWM Plan must:

- Name the RWMG responsible for development and implementation of the IRWMP.
- Define how the RWMG meets the definition of CWC §10539.

Include a list of the RWMG and project proponents who adopted the Plan.

- Describe the governance structure and how it ensures the Plan will be updated and implemented beyond State grant programs.

- Proposition 84 & 1E IRWM Guidelines, November 2012, Pages 18 to 19

Table 4-1: ESRWMP Representatives and Alternates

City	Category	Name	Contact Info
<i>City of Modesto</i>	Representative	David Geer	dgeer@modestogov.com
	Alternate	Dave Cogdill	dcogdill@modestogov.com
<i>City of Turlock</i>	Representative	Forrest White	fjwhite@charter.net
	Alternate	Amy Bublak	abublak@yahoo.com
<i>City of Ceres</i>	Representative	Chris Vierra	chris.vierra@stantec.com
	Alternate	Bret Durossette	bret.durossette@ci.ceres.ca.us
<i>City of Hughson</i>	Representative	Jill Silva	jsilva@hughson.org
	Alternate	Matt Beekman	mattbeekman@usa.net

The ESIRWM region operates primarily on a consensus basis. The ESRWMP acts as the lead voice in the IRWMP development and implementation as there are multiple agencies, stakeholders, and members of the public involved in the process. The ESRWMP also acts as the ultimate decision maker in the rare case that the other supporting committees cannot come to a consensus. The ESRWMP facilitates communication, cooperation and education between member agencies; facilitates implementation of the IRWMP and overall planning process; provides oversight to both the Steering Committee and Public Advisory Committee; finalizes the prioritization methodologies based on Committees' input; approves the screening and ranking of submitted projects; and ultimately determines the methodology for inclusion of projects in grant applications. ESRWMP meetings are held, as needed, at the discretion of the group. Each member agency is represented on the ESIRWMP by one person and one alternate (generally someone from within the agency's management structure with decision-making authority). The ESRWMP meetings are open to the public, and the public may provide comment on agenda items.

The **Steering Committee (SC)** leads preparation and implementation of the IRWMP and future amendments and updates of the Plan (as described further in Chapter 7 of this plan), and generally manages the work. Representatives of the SC are generally those that are actively managing projects. Responsibilities of the SC include:

- Manage contracts, information/databases, reporting
- Manage the IRWM Plan development and implementation
- Provide guidance to consultants and manage contracts
- Manage budgets and schedule
- Coordinate with the Public Advisory Committee
- Present unresolved issues/work tasks to the Public Advisory Committee
- Coordinate and implement the public outreach process
- Manage the East Stanislaus IRWMP website
- Ensure meetings are announced and posted in advance
- Coordinate distribution and posting of materials
- Convey Public Advisory Committee's recommendations to the ESRWMP
- Manage and formally submits IRWM-related grant applications

The SC representatives report back to the ESRWMP representatives throughout the planning process to brief them regarding specifics for plan implementation and to gain approval for the Plan's content. Similar to the ESRWMP, each agency or organization participating on the SC is

represented by one person and one alternate; current representatives are shown in Table 4-2. SC members may remain engaged in the East Stanislaus IRWM planning process for the length of their affiliation with their representative agency and as long as they remain active in their role (per the SC Roles and Responsibilities). Additional SC members may be added at any time, provided the existing SC members do not object and the proposed member agrees to follow the Roles and Responsibilities adopted by the SC (Appendix C). SC meetings are open to the general public and the SC directly engages the public as needed, such as when public input is solicited on project/planning deliverables. During the SC meetings, the public may provide comments on agendized and non-agendized items.

Table 4-2: Steering Committee Representatives and Alternates

City	Category	Name	Contact Info
<i>City of Modesto</i>	Representative	Jack Bond	npinhey@modestogov.com
	Alternate	Jim Alves	jalves@modestogov.com
<i>City of Turlock</i>	Representative	Dan Madden	dmadden@turlock.ca.us
	Alternate	Michael Cooke	mcooke@turlock.ca.us
<i>City of Ceres</i>	Representative	Mike Brinton	Michael.Brinton@ci.ceres.ca.us
	Alternate	Toby Wells	Toby.Wells@ci.ceres.ca.us
<i>City of Hughson</i>	Representative	Thom Clark	tclark@hughson.org
	Alternate	Dominique Spinale	dspinale@hughson.org

The **Public Advisory Committee (PAC)** is a stakeholder committee that provides input and recommendations to the ESRWMP and SC, and is comprised of governmental and non-governmental organizations (NGOs), environmental groups, community organizations, disadvantaged communities and other special interest groups and parties. The PAC is the first tier of decision making and provides recommendations for developing project prioritization methodologies to the SC, helps screen, integrate and rank projects, contributes to development of the methodology for inclusion of projects in grant applications, provides direct public communication and seeks public feedback and input, and conducts other actions as directed. Similar to the ESRWMP, each agency or organization participating on the PAC is represented by one person and one alternate. When multiple applications are received for a single organization, the SC works with that organization to identify a single representative and an alternate for each organization, thereby providing equal representation by all interested parties. PAC members may remain engaged in the East Stanislaus IRWM planning process for the length of their affiliation with their representative agency and as long as they remain active in their role (per the PAC Roles and Responsibilities).

Generally, anyone who wants to participate in the IRWM planning and implementation process can, at a minimum, participate in the PAC. An open call for applicants for the PAC was placed on March 16, 2011 and was followed up by direct participation solicitation by ESRWMP member agencies. Additional PAC members may be added at any time, provided the existing PAC members do not object and the proposed member agrees to follow the Roles and Responsibilities adopted by the PAC (Appendix D). Current members of the PAC are shown in Table 4-3.

Table 4-3: Public Advisory Committee Representatives and Alternates

Name	Affiliation	Contact Info
Garner Reynolds	City of Newman	greynolds@cityofnewman.com
Felipe Casas	DAC representative	felipec@selfhelpenterprises.org
Laura Jensen	The Nature Conservancy	Laura_Jensen@TNC.org
Mike Willett	Turlock citizen, City of Patterson Staff	MWillett@ci.patterson.ca.us
Patrick Koepele	Tuolumne River Trust	Patrick@tuolumne.org
Daniel Padilla	Ceres area citizen	dpadilla@cenvaleng.co padillaengineering@yahoo.com
Julie Rentner	River Partners	jrentner@riverpartners.org
Jason Preece	California Department of Water Resources	jpreece@water.ca.gov

PAC meetings are open to the general public, who may provide comment on any meeting item, whether it is included on the meeting agenda or not. In fact, the Region has a large group of interested stakeholders who are unable to commit to the PAC meeting schedule but who participate in the process in an external manner (see Chapter 4.2.1, below, regarding stakeholders). The members on the stakeholder list are interested parties that receive updates of the IRWM planning process via email and are encouraged to provide comments electronically on draft East Stanislaus IRWMP-related documents. Subcommittees to the PAC are formed, as necessary, to discuss specific water management activities/goals or to assume specific tasks as designated by the PAC. These subcommittees have the same procedures and policies as the PAC.

The governance structure for the ESIRWM region is organized as shown in Figure 4-1. In general, the PAC and SC work on plan development and implementation in a concurrent manner, with information passed between the two committees through key participant attendance at both and through participation on subcommittees. The PAC then conveys information to the ESRWMP through the SC for final decision, as needed. Members of the ESRWMP and SC can attend the PAC meetings as they wish. This structure helps to ensure the long-term implementation of the IRWM program by ensuring the continuing participation of members, clearly defining the anticipated roles and responsibilities of each participating member, and by allowing for modifications and adaptations to meet changing future conditions.

Governance-related Documents:

Appendix A – East Stanislaus Regional Water Management

Partnership MOU

Appendix C – Steering

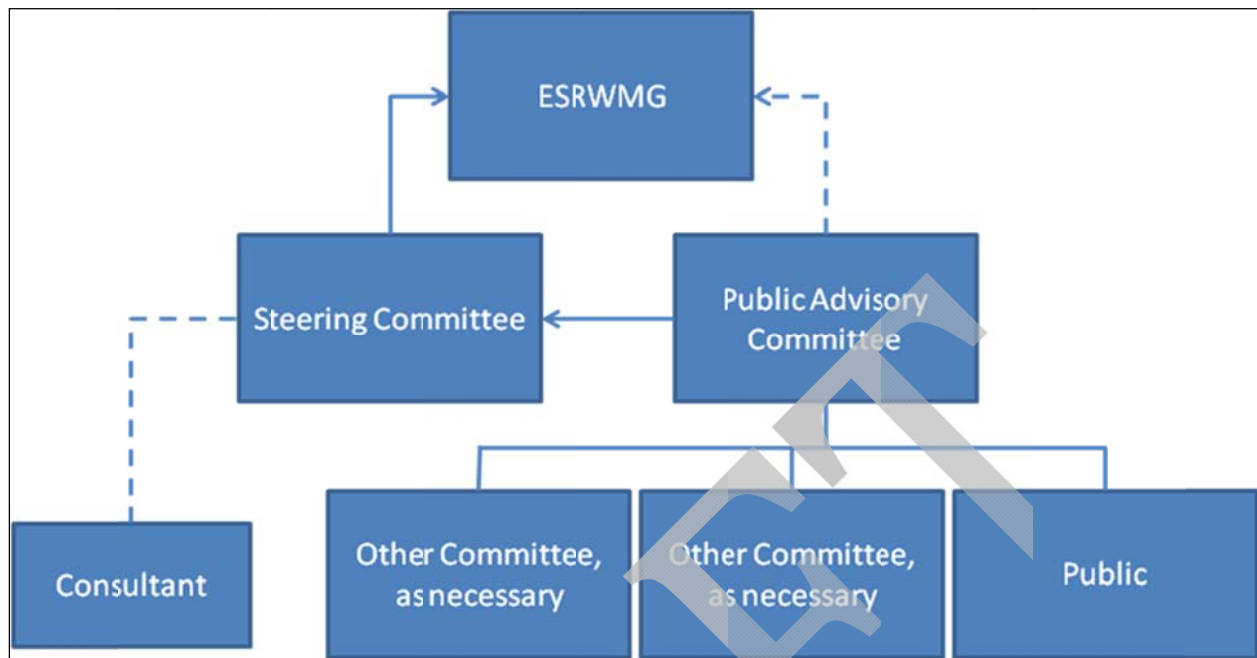
Committee Roles & Responsibilities

Appendix D – Public Advisory

Committee Roles & Responsibilities

Appendix E – Outreach and Communications Plan

Figure 4-1: East Stanislaus Region Governance Structure



Because the East Stanislaus Region is still relatively new, it is possible that new member organizations and/or forums may be added to the governance structure in the future as the Region matures. If an agency/entity/city would like to participate in some form of the Region's governance, the ESRWMP is first notified of their interest and the committee on which they would like to participate. The ESRWMP will then coordinate with the ESRWMP, SC and/or PAC members for consideration and acceptance. Organization representatives may be added to the ESRWMP, but signing the Region's MOU is a mandatory requirement. Additional members may also be added to the SC and/or PAC, however existing SC/PAC members must approve the addition and the new PAC members must represent organizations not current participating on the PAC. Signing the Region's MOU is not required for participation on the SC or PAC.

4.1.2 RWMG Composition

As previously noted, the official RWMG for the East Stanislaus IRWM Region is the East Stanislaus Regional Water Management Partnership (ESRWMP), currently comprised of four member agencies: the Cities of Modesto, Ceres, Turlock, and Hughson. This Region, and its associated RWMG, are relatively new and were recently developed, beginning in July 2010, to foster regional communication and cooperation and to cooperatively resolve potential water supply conflicts in the Region. Although there are other local agencies within the region that have statutory authority over water supply or water management and who have been invited to participate in the East Stanislaus IRWM planning process, some have shown interest while other agencies have chosen not to participate as part of the RWMG at this time or are still considering their level of participation. They will continue to be encouraged to participate in the PAC or within the general public forum, at a minimum and will be provided with meeting notices and other relevant information.

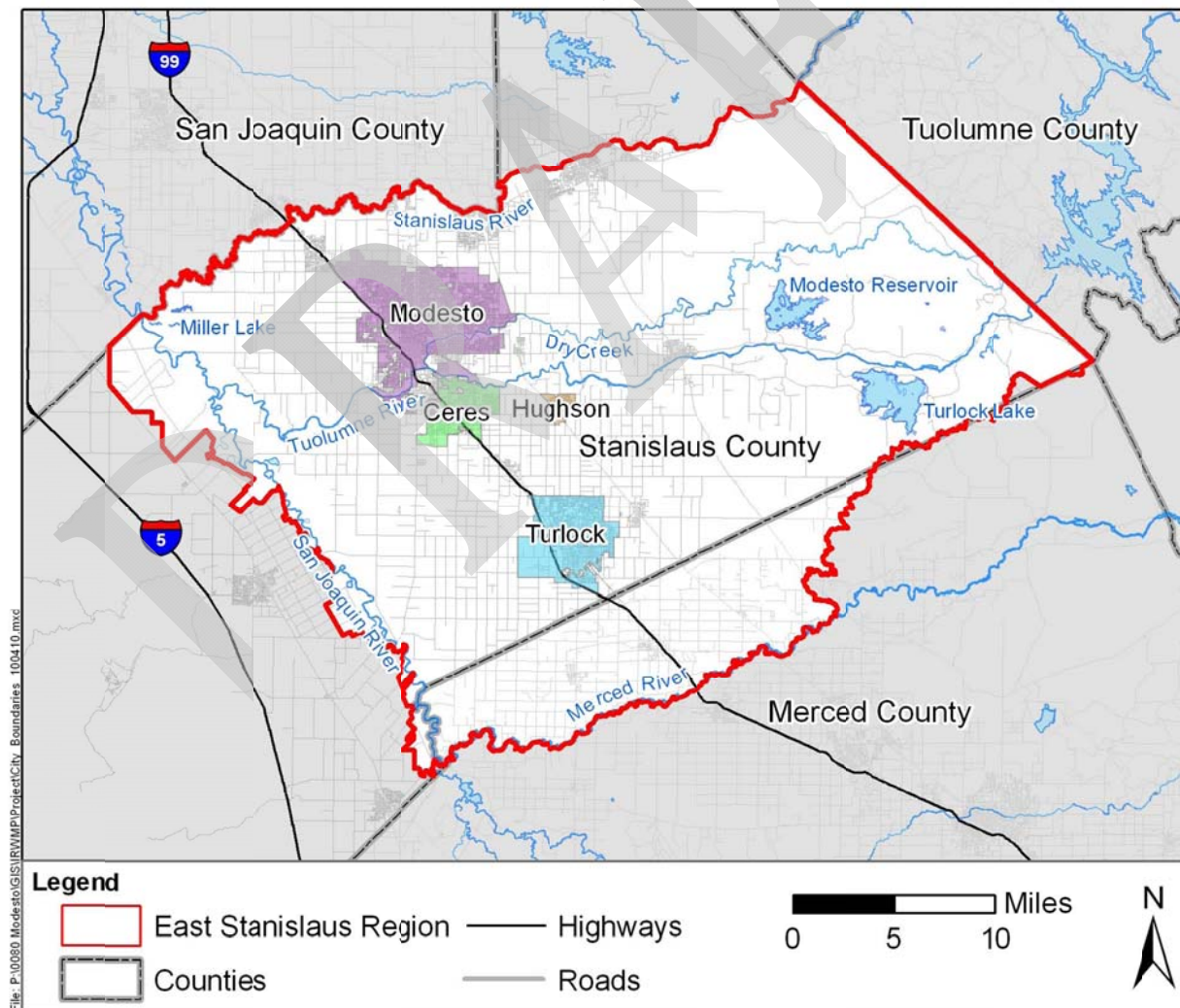
As it is currently structured, the RWMG member agencies cover various responsibilities within the Region. These are summarized in Table 4-4.

Table 4-4: Member Agencies' Water Management Responsibilities

Member Agency	Water Management Responsibility				
	Water Supply & Quality	Wastewater	Recycled Water	Stormwater/ Flood	Watershed/ Habitat
City of Modesto	✓	✓	✓	✓	✓
City of Ceres	✓	✓	✓	✓	✓
City of Turlock	✓	✓	✓	✓	✓
City of Hughson	✓	✓	✓	✓	✓

Each of the four cities is located within the East Stanislaus regional boundaries and manages multiple diverse aspects of water resources throughout the East Stanislaus Region. Further, each of the four cities is granted statutory authority to manage and deliver water within their purview under CWC Section 1460. The Cities' associated boundaries are shown in Figure 4-2.

Figure 4-2: ESRWMP Member Agencies



The City of Modesto provides drinking water, wastewater services, and storm drain and sewer maintenance to the city and surrounding communities. The City of Modesto supplies water to the City of Waterford and the communities of Salida, Empire, Hickman, Del Rio, Grayson, parts of the City of Turlock, a northern part of the City of Ceres, as well as other unincorporated County areas contiguous to the City of Modesto. Modesto pumps and delivers groundwater from 96 operating groundwater wells throughout its service area, and receives treated surface water through a long-term agreement with Modesto Irrigation District (MID) from Modesto Reservoir, which is operated by MID. Modesto also operates two wastewater treatment facilities; the Sutter Avenue Primary Treatment Plant and the Jennings Road Water Quality Control Plant, which was recently upgraded to provide tertiary treatment. There is potential for the City of Modesto to provide recycled water to users in the future; a feasibility study is currently underway by Del Puerto Irrigation District to further explore this option and identify new facilities that would be required for recycled water delivery and use. The Cities of Turlock and Ceres are also involved in this effort, referred to as the North Valley Regional Recycled Water Program (NVRWP). Under the NVRWP, up to 46,900 acre-feet per year of recycled water produced by the Cities of Modesto, Ceres, and Turlock would be delivered to Del Puerto Irrigation District and other potential users for agricultural irrigation.

Groundwater is the only source of potable water for the City of Ceres. The Ceres Water Services Division maintains the City's ten groundwater wells, two reservoirs providing a total of 4 million gallons (MG) of storage, and associated pipelines and pump stations. Ceres also manages storm drainage services to handle internal storm runoff and flood protection. The City of Ceres Sanitary Services Division manages, operates and maintains the Ceres Wastewater Treatment Plant and wastewater collection system. One million gallons per day (mgd) of wastewater from the City of Ceres is sent to and treated at the City of Turlock's Regional Water Quality Control Facility. Wastewater from Turlock's residents and commercial and industrial dischargers, as well as wastewater from Denair and Keyes Community Service Districts, is also treated at the Turlock Regional Water Quality Control Facility.

For water supplies, the City of Turlock relies solely on groundwater. Turlock serves a population of over 70,000 residents using 24 active groundwater wells and more than 230 miles of water distribution lines. The wells can produce a maximum of 53 million gallons of water per day. At present the Stanislaus Regional Water Authority, comprised of the Cities of Turlock, Modesto, and Ceres is developing the Regional Surface Water Supply Project. This project consists of a new Tuolumne River diversion, a 29 mgd water treatment plant and downstream transmission mains that would divert, treat, and deliver surface water supplied from TID to the Authority for treatment and use, providing a conjunctive use strategy and reducing reliance on groundwater sources. Turlock also provides recycled water for irrigation, and 2 mgd of recycled water is provided to TID for cooling purposes at its Walnut Energy Center. The Utility Maintenance Division of the City of Turlock provides safe and effective water, wastewater and storm distribution system and related services to its service area.

Similar to Ceres and Turlock, the City of Hughson manages the water, stormwater and wastewater systems within its city boundaries, relying solely on groundwater for its raw water. The City's water system consists of five groundwater wells scattered through the City, pumping from Turlock Groundwater Subbasin, and a distribution system with pipes ranging from 2- to 16-inches in diameter, as well as a storage tank with a capacity of 750,000 gallons.

As previously described in Section 4.1.1, Organization, the ESRWMP member agencies signed a MOU dated August 23, 2011 committing to the purpose of coordinating water resources planning efforts and developing an integrated regional water management plan (IRWMP) for the East Stanislaus Region. The MOU outlines the overall goals of the IRWM planning effort, the roles each city has as an ESRWMP member, as well as indicating that they are expected to adopt the completed

IRWMP. Any stakeholder entity that chooses to accept or adopt the East Stanislaus IRWMP will be asked to demonstrate support and commitment to implementation of the IRWMP once the plan is finalized.

4.1.3 Decision Making

Decisions within the East Stanislaus Region are made using a consensus-based approach. The East Stanislaus Region is still a relatively new IRWM region and thus far, only IRWM plan-related decisions have been made. The ESRWMP has developed a protocol for other decision-making processes as described herein.

Any decision being made by the ESRWMP is done so based on a vote; each member representative in the ESRWMP gets one vote and all actions require a simple majority vote. Regional decision-making and management processes may be revised as the Region matures and the IRWMP is developed and implemented. Methods to establish IRWMP goals and objectives, prioritize projects, implement the IRWMP, and revise and update the IRWMP in the future are discussed in other sections of this plan. Each is briefly summarized here:

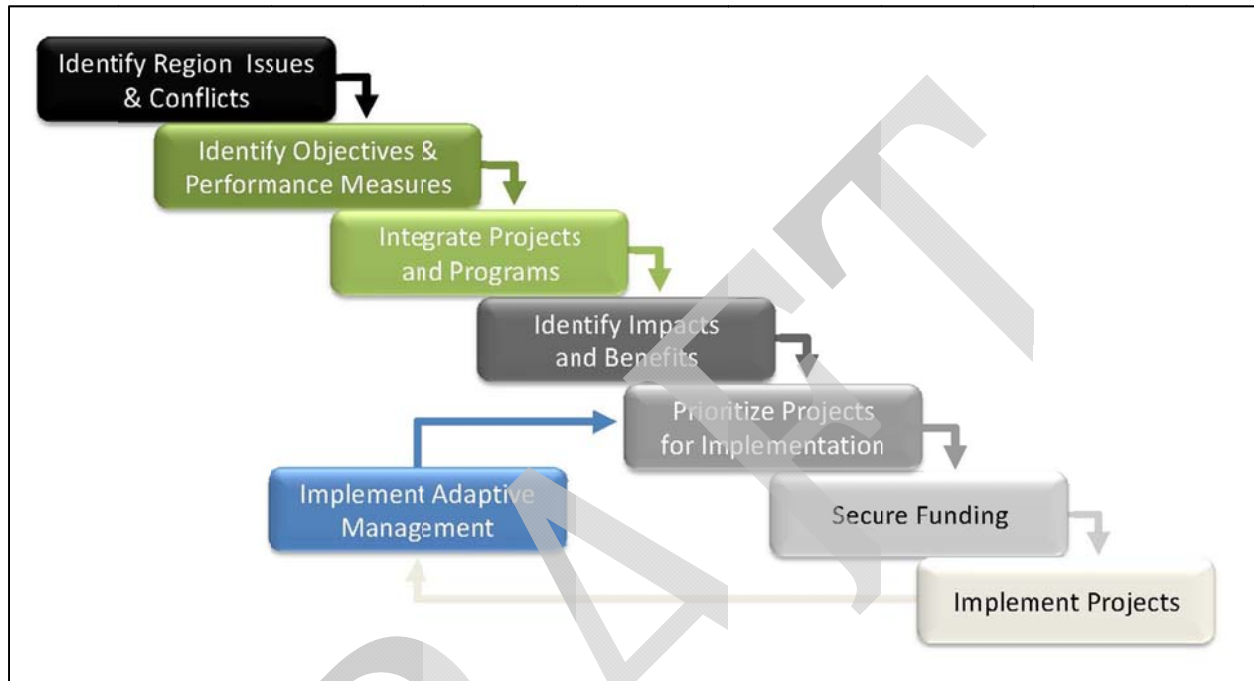
- **Establish IRWM Plan Goals & Objectives.** Issues and Conflicts within the East Stanislaus Region have been identified and were presented to DWR in East Stanislaus' Region Acceptance Process application. The SC and PAC jointly develop draft goals and objectives based on the identified Regional issues and conflicts; these are discussed in Chapter 4 of this IRWMP.
- **Prioritize Projects.** A prioritization process was developed for ranking submitted projects based on the degree to which they meet the IRWM Plan goals & objectives, in addition to any other parameters the ESRWMP and committees decide upon (e.g. IRWM Program Preferences). The process developed for this project prioritization is documented in Chapter 5 of this IRWMP.
- **Implement the IRWM Plan.** The SC will be the lead in ensuring the IRWM Plan is implemented. Based on the MOU signed by each ESRWMP member agency, it is the personnel and financial resources of each member that facilitated the development and implementation of this IRWM Plan. The IRWM Plan will be implemented through the implementation of a series of short-term projects and long-term projects and programs.
- **Revise and Update the IRWM plan.** The East Stanislaus IRWM Plan is a planning tool, and will require updates in response to emerging water management challenges and new project needs, and to ensure the Plan appropriately addresses the East Stanislaus Region's evolving needs. Similar to the implementation of the Plan, the SC will lead the effort to update and revise this Plan, as necessary, while the ESRWMP will provide the staff and financial support, as necessary to achieve this goal. This structure will help ensure the long-term sustainability of the East Stanislaus IRWM Plan and continual implementation of the Plan into the future. Chapter 7 of this document describes the process by which the East Stanislaus IRWMP is managed and updated.

As described above and shown in Figure 4-3 below, the East Stanislaus Region developed a specific, but flexible, method for decision making and a general framework for developing and implementing an IRWM Plan. The Region began by identifying specific goals and objectives to meet the identified water management issues and conflicts within the Region. These goals and objectives formed the basis for identifying and integrating the Plan's projects, prioritizing those projects, and completing an IRWM Plan.

All decisions required for preparation of the IRWMP, including development of the goals and objectives, identification, integration and prioritization of projects, and development of the IRWM

Plan, were completed in a collaborative manner. Initial decisions/initiative development were formulated at the SC and PAC level (in a collaborative manner), and were then brought to the ESRWMP for acceptance. The decision-making process and overall governance structure of the East Stanislaus Region thus facilitates the development of a single, collaborative water management portfolio prioritized based on meeting the regional goals and objectives.

Figure 4-3: ESRWMP Development Process



As described in Chapter 4 of this IRWMP, conflicts and issues within the Region were identified and discussed and agreed upon by the ESRWMP, SC and PAC. These regional conflicts and issues include:

- Water supply reliability for both agricultural and urban users;
- Localized flooding and stormwater quality issues;
- Groundwater overdraft and contamination; and
- Management and protection of surface water resources as both water supplies and recreation.

In the past, the cities and agencies in the area have worked together to develop solutions to the issues facing the Region. For example, recent studies have shown the Turlock Groundwater Basin may be overdrafted requiring even closer collaboration and planning for the Basin. The Turlock Groundwater Basin Association (TGBA) member agencies, including Turlock Irrigation District, Merced Irrigation District, the Cities of Ceres, Turlock, Modesto and Hughson, Hilmar and Delhi County Water Districts, the community services districts of Keyes, Denair, and Ballico, the Eastside and Ballico-Cortez Water Districts, and the Counties of Merced and Stanislaus, have been coordinating on issues related to the groundwater basin since the mid-1990's. Through this early coordination and identification of the overdraft conditions, the TGBA has conducted additional studies, updated the GWMP, and has developed projects to aid the recovery of the groundwater basin. The agencies involved in the East Stanislaus IRWM region have a history of successfully

working together, and this is reflected in the way the ESRWMP operates. By forming the ESRWMP on a voluntary basis, building commitment through development of shared goals and objectives, the East Stanislaus IRWM effort will be sustained through the ongoing efforts to meet those goals and objectives.

In addition to the ESRWMP and its committees, general stakeholders, disadvantaged and tribal communities, the public at large, and adjacent IRWM regions also have a role in the East Stanislaus IRWM planning process. The Region has established an outreach process by which many of these stakeholders have been, and will continue to be, contacted, and their concerns and ideas solicited and considered for inclusion in this plan. This process is described in Chapter 4.2 of this IRWMP. Further, the ESRWMP has already begun coordinating with several adjacent IRWM regions to facilitate coordination of solutions to inter-regional issues and to advance inter-regional projects. For example, ESRWMP members are participating in meetings of the adjacent Westside-San Joaquin Region. The ESRWMP has also engaged in discussions with the Merced Region and the Tuolumne-Stanislaus Region on development of Letters of Cooperation with these regions. However, because the East Stanislaus Region is relatively new, relationships with other IRWM regions have not yet been formed. For its part, the ESRWMP will ensure the neighboring IRWM regions are invited to participate in its planning process and will endeavor to identify inter-regional projects and programs that can maximize benefits and beneficiaries for all regions involved. The East Stanislaus Region will strive to be inclusive rather than exclusive, not only within the Region but with neighboring IRWM Regions as the ESRWMP recognizes the effectiveness of developing integrated projects and programs to create multi-benefit opportunities.

4.2 Stakeholder Involvement and Outreach

An IRWMP must contain:

- A public process to provide outreach and opportunities to participate in IRWMP development and implementation to appropriate local agencies / stakeholders.
- A process used to identify, inform, invite and involve stakeholder groups in the planning process including mechanisms and processes to facilitate stakeholder involvement and communication during IRWMP development / implementation.
- A description of how the RWMG will endeavor to involve DACs and Native American tribal communities.
- A description of the decision making process including IRWM committees, roles, or positions that stakeholders can occupy and how a stakeholder can participate without contributing financially.
- A description of how stakeholders are necessary to address objectives and RMS of the IRWMP and how they are involved.
- A discussion of collaborative process that engage a balance of interest groups regardless of their ability to contribute financially.

- *Proposition 84 & 1E IRWM Guidelines*, November 2012, Pages 22 and 23

The East Stanislaus Region understands the importance of engaging stakeholders and the general public throughout the water management planning and IRWM process. In October 2011, the SC finalized a Stakeholder Outreach and Communications Plan to specify the identified methodology and approach to ensure the timely dissemination of information associated with preparation and implementation of the East Stanislaus IRWMP to the general public and stakeholders. The Outreach Plan includes identification of goals and objectives specific to public outreach, discussion of targeted outreach to disadvantaged communities (DACs), and methods for inter-regional coordination. The Outreach Plan is included as Appendix E. In order to engage stakeholders, including disadvantaged and tribal communities, the East Stanislaus Region conducts various meetings that are open to the public. DACs were

identified through a Geographic Information System (GIS) analysis as discussed in Chapter 2. No tribal communities have been identified within the Region to date; however, it is possible that as more public meetings are conducted and additional outreach to stakeholders takes place, that tribal communities within the Region may be identified.

The SC provides notice of all meeting types by posting the agenda, notices, and minutes on the East Stanislaus IRWM planning website, as well as posting on a public announcement board and direct mailings and/or emails to members on the stakeholder contact list. The SC ensures all meeting notices are posted with ample time for the public to participate. Additionally, the SC has issued notices in local newspapers. For example, a public notice (in English) announcing the first public workshop in March 2011 was featured in the Turlock Journal, Modesto Bee, Ceres Courier. The same notice, but in Spanish, was published in the Vida en el Valle, a newspaper focused on the Latino community of the central San Joaquin Valley that is published weekly in five cities, including Modesto. The notices were also printed and placed in local libraries and city offices. Other notices published in newspapers were to announce the Notice of Intent to prepare the IRWMP. Copies of these notices and publications are included in Appendix F.

The governance structure developed for the East Stanislaus Region allows for the flow of information between committees and groups in the region. As with any agency or organization, there are overlaps and methods for communicating from the staff level to management level and above. The ESRWMP tends to be comprised of management level staff at the Cities of Modesto, Turlock, Ceres and Hughson; the SC includes staff level members from the cities; and the PAC is made of volunteering stakeholders from other cities and agencies. The governance structure is set-up so that members of the SC can attend PAC meetings and relay information to members of the ESRWMP regarding information and communication from the SC and PAC. Members of the SC often attend PAC meetings. Additionally, PAC members and general public can attend open ESRWMP meetings to provide comments and actively participate in development and implementation of the East Stanislaus IRWM Plan.

4.2.1 Stakeholders

On March 16, 2011, the ESRWMP conducted an initial public workshop to announce the creation of the East Stanislaus Region and the IRWM planning process within the Region. At this meeting, contact information of all meeting attendees was compiled and a stakeholder list was created. The stakeholder contact list is continually updated as new persons, entities, and organizations express interest in the IRWM planning process. The most recent version of this stakeholder list is included in Appendix G. Materials from the meeting including the PowerPoint presentation, handouts, and sign-in sheets are included in Appendix H.

In addition to providing general information about the IRWM planning process at the initial public meeting, a call for applications for participation in the Public Advisory Committee (PAC) was conducted in which stakeholders who wanted to become a member of the PAC could voice their interest in doing so, understanding that they will attend regularly scheduled meetings and are committing to a designated person or alternate in attendance. The PAC serves as one venue for conveying stakeholders input, comments, interests and ideas to the planning process. Unfortunately, no one signed up for the PAC at the March 16th initial public meeting, so a direct solicitation for participants followed and the initial PAC members were identified. As previously noted, it is anticipated that membership in the PAC will continue to expand as interest in the IRWMP grows. In the interim, direct outreach to the public and local agencies and organizations is continuing to encourage stakeholders to participate in the PAC.

Several other public meetings and workshops have been held subsequent to the March 2011 public meeting. These workshops were held at key junctures in the IRWMP development process and were held as follows:

- April 12, 2012 - public workshop to announce the call for (solicitation of) projects for inclusion in the IRWMP.
- [ADD MEETING DATE IN 2013] – public workshop to present the draft IRWMP and its contents.
- [ADD MEETING DATES IN 2013] – public meetings in conjunction with the IRWMP adoption by [ADD NAMES OF ADOPTING ORGANIZATIONS].

The public outreach process for the East Stanislaus Region provides stakeholders with two general options for involvement: (1) general public participation at the ESRWMP, Steering Committee, and PAC meetings and public meetings, and (2) involvement through participation in the PAC. This format ensures both a balanced and diverse collection of stakeholders due to the flexibility in the level of commitment and involvement for those interested.

The following methods are used to not only disseminate information to stakeholders, disadvantaged and tribal communities and the general public, but also can be used by them to provide input, ask questions, and participate in the planning process and IRWM Plan development process:

- ESRWMP, Steering Committee, and PAC meetings
- Public meetings
- East Stanislaus IRWM planning website
- Handouts, newsletters, advertisements

The East Stanislaus IRWM website allows for an even and effective exchange of information between the ESRWMP, regional stakeholders and the public, while the newsletters and handouts ensures information access for all. The ESRWMP recognizes the significance of stakeholder input and therefore provides these various avenues for participation. Public input is further described in greater detail in Chapter 4.3, Public Forums.

As previously noted, there are other local agencies within the Region with statutory authority over water supply and/or water management; these agencies have been invited to participate in the IRWM planning and implementation process, but some have declined at this time. Many of the local agencies have a history working with the member agencies; for example, the City of Modesto and the Modesto Irrigation District (MID) have a water supply relationship (wholesaler-retailer) and have prepared joint-Urban Water Management Plans (UWMPs) due to the overlap in water resources management and shared water resources. The ESRWMP cooperates with these other agencies and districts through various planning processes and implementation of projects, and will continue to do so into the future.

Other participants that will be involved in the IRWM planning and implementation process within the East Stanislaus Region are summarized in Table 4-5. Some of the stakeholders that are currently not participating have been contacted directly, and it is expected some will begin to participate as the IRWM process progresses. The Stakeholder Contact List (included in Appendix G) includes contact information for most of the identified stakeholders, and meeting updates, handouts, and announcements are mailed or sent electronically to these organizations to keep stakeholders informed and up to speed on ways to participate in the East Stanislaus IRWM process.

Table 4-5: Other Identified Participants in IRWM Planning Effort

Category	Participant Name	Working Relationship
Wastewater	Empire Sanitary District	Stakeholder (not currently participating)
	Salida Sanitary District	Stakeholder (not currently participating)
Irrigation / Water Districts	Modesto Irrigation District	Stakeholder (not currently participating)
	Turlock Irrigation District	Stakeholder (not currently participating)
	Eastside Water District	Stakeholder (not currently participating)
	Oakdale Irrigation District	Stakeholder (not currently participating)
	Merced Irrigation District	Stakeholder (not currently participating)
	Del Puerto Water District	Stakeholder (not currently participating)
	Ballico-Cortez Water District	Stakeholder (not currently participating)
	Delhi County Water District	Stakeholder (not currently participating)
	Hilmar County Water District	Stakeholder (not currently participating)
Cities	Riverbank	Stakeholder
	Patterson	Stakeholder
	Waterford	Stakeholder
	Oakdale	Stakeholder
Other Communities	Grayson	Stakeholder (not currently participating)
	Denair	Stakeholder (not currently participating)
	Del Rio	Stakeholder (not currently participating)
	Monterey Park Track	Stakeholder
Electrical Corporation	Pacific Gas & Electric	Stakeholder (not currently participating)
Counties	Merced	Stakeholder (not currently participating)
	Stanislaus	Stakeholder (not currently participating)
Federal, State and Local Agencies	Turlock State Park	Stakeholder (not currently participating)
	County Farm Bureau	Stakeholder
Disadvantaged Communities	Keyes	Stakeholder (not currently participating)
	Bret Harte	Stakeholder (not currently participating)
	Bystrom	Stakeholder (not currently participating)
	Hickman	Stakeholder (not currently participating)
	Shackleford	Stakeholder (not currently participating)
	Grayson	Stakeholder (not currently participating)
	Newman	Stakeholder
	West Modesto	Stakeholder (not currently participating)
	Empire	Stakeholder (not currently participating)
	Riverdale Park	Stakeholder (not currently participating)
	Friends of Tuolumne	Stakeholder (not currently participating)
Environmental Groups	Tuolumne River Trust	Stakeholder
	River Partners	Stakeholder

Note for Table 4-5: The ESRWMP has been, and will continue, contacting these stakeholder organizations directly to solicit participation in the East Stanislaus IRWMP.

4.3 Public Forums

The formation of the East Stanislaus RWMG and conception of the Region were announced to the public through a workshop on March 16, 2011. This workshop identified stakeholders and solicited for participants, agencies, and other entities that wanted to receive meeting announcements and updates. Contact information was collected, and an email distribution list was developed. This list continues to be updated with new additions as interest in involvement increases. Additional public involvement continues throughout the development of the East Stanislaus IRWMP and through implementation of the Plan, as described herein.

In order to make the public both aware of and a part of the regional water management planning and IRWM planning efforts within the Region, various methods have been applied to reach a varied audience. Public meetings have been conducted to introduce the IRWM process and, as needed, to update the public at key junctures in the regional water management process and to allow for public input. As discussed in the governance structure section, the ESRWMP conducts meetings for themselves, the Steering Committee, and the Public Advisory Committee. The public is allowed and encouraged to attend Steering Committee and Public Advisory Committee meetings and provide comments on both agendized and non-agendized items. The public is also welcome to attend open sessions of ESRWMP meetings to provide comments on agendized items only (similar to the way City Council meetings are conducted). The Steering Committee provides notice of all meeting types by posting the agenda, notices, and minutes on the East Stanislaus IRWM planning website (found at www.eaststanirwm.org), as well as posting on a public announcement boards and direct mailings to a mailing list of interested stakeholders. The Steering Committee ensures the meeting notices are posted with ample time for the public to participate in the meetings. Additionally, as documents are developed and public review is solicited, copies are placed in public libraries for public access and on the Region's website.

Other mechanisms used to ensure public awareness of the East Stanislaus IRWM process include the development and distribution of brochures, fact sheets and brief updates. Hard copies are available at meetings and electronic copies are sent to the email distribution list and posted on the Region's website. The website allows the ESRWMP to disseminate information to a wide audience. The website is updated on a bi-monthly basis, at a minimum, to maintain current meeting information and past project updates, press releases, meeting materials and other items of interest. The website domain is hosted by the City of Modesto, and each ESRWMP member agency has a link to the East Stanislaus IRWMP website on its respective agency-specific website. The website also allows for stakeholders to enter comments and questions, and provides contact information should they want to speak to an East Stanislaus Region representative. The website acts as a forum for the ESRWMP and stakeholders to exchange information throughout the IRWM planning process.

There are multiple ways for the public to gain access to the ESRWMP and IRWM process. The ESRWMP makes information available to the general public, including the status of the IRWM process and upcoming decisions to be made, through the handouts and website. If a member of the general public or a stakeholder has questions and comments, they are directed to a designated contact, Jim Alves at the City of Modesto (the designated ESIRWMP representative); his contact information is provided in Table 4-6.

Table 4-6: Contact Information

	City of Modesto
Point of Contact	Jim Alves
Title	Associate Civil Engineer
Mailing Address	1010 10 th Street Modesto, CA 95354
Phone Number	209-571-5557
Fax Number	209-522-1780
Email Address	jalves@modesto.gov

The public can provide input to the ESRWMP by attending the meetings, calling the provided contact, or emailing the contact with comments and questions. The designated contact discusses the questions and comments received with the Steering Committee, who takes the public input into consideration and responds to each call or email, as appropriate. If the ESRWMP receives public comment directly, the group evaluates the issues raised, and provides the comments/input to the Steering Committee to consider and respond to as appropriate.

In order to address the diversity of water management issues, geographical representation and stakeholder interests within the East Stanislaus Region, the ESRWMP has identified, and directly invited, key parties to participate in meetings and committees. Additionally, the ESRWMP plans to partner with local colleges, such as Modesto Junior College, California State University-Stanislaus, Humphreys College, and San Joaquin Valley College to encourage participation from younger participants, between the ages of 18 and 25. There is also the potential to combine participation in meetings with classes and/or class projects and studies. By performing specific outreach to local colleges, a wide range of ideas and energy can be accessed.

4.3.1 Outreach to Disadvantaged Communities

A Disadvantaged Community (DAC), according to the State of California (CA Water Code, Section 79505.5(a)), is a community with a Median Household Income (MHI) less than 80 percent of the California statewide median household income. DWR compiled the U.S. Census Bureau's American Community Survey (ACS) data for the period of 2006 to 2010. Based on this data, a community with an MHI of \$48,706 or less is considered a DAC. Within the East Stanislaus Region, the communities of Keyes, Bret Harte, Bystrom, Empire, Grayson, Shackelford, West Modesto, Riverdale Park, Newman, and portions of Modesto, Turlock, Denair, Hughson, Oakdale and Ceres are DACs. Involvement and participation by representatives of these communities during the East Stanislaus IRWM planning process was solicited and encouraged to help understand the issues confronted by DACs and better address the needs of minority and/or low-income communities. This outreach included discussions and meetings with representatives from the communities of Newman and Keyes. Objectives of specific outreach to DACs include:

- Solicit involvement by individual representatives from DACs within the East Stanislaus Region and encourage participation by those representatives as members of the PAC.
- For DACs which do not have designated community representatives on the PAC, encourage other PAC members to specifically advocate and represent the interests of those DACs which may lie within a PAC member's jurisdiction or area of special interest.
- Inform representatives and residents of DACs via flyers and newspaper notices about opportunities to get involved with the East Stanislaus IRWM planning process and participate in development, integration, and prioritization of projects.

4.3.2 Outreach to Native Americans

The City of Turlock acquired a list of Native American Contacts within Stanislaus County from the Native American Heritage Commission as part of the CEQA process for the Turlock Regional Water Quality Control Facility Upgrade and Expansion in 2009. The Native American contacts included a chairperson for the Tule River Indian Tribe, two Spiritual Leaders for the Southern Sierra Miwuk Nation, a Chairperson for the Southern Sierra Miwuk Nation, and a representative of the North Valley Yikuts Tribe. Based on the results of this assessment, there are no tribal communities within the East Stanislaus IRWM Region. Formal letter communications were conducted to two tribes with possible ties to areas within the Region, but no response has been received to date. Any Native American community member may, however, participate in the IRWM process through any of the stakeholder processes previously described. Continued efforts of various means will be used to locate and contact Native American interests within the Region through ongoing and future outreach efforts.

4.4 Coordination with Other/Neighboring IRWM Regions

The East Stanislaus IRWM Region borders the Eastern San Joaquin, Merced, Tuolumne-Stanislaus and Westside-San Joaquin IRWM Regions. The Region's boundaries were identified to fill the void in IRWM coverage in this part of California, as well as to balance the need for boundaries based on natural watershed, groundwater basins and political and jurisdictional boundaries. All known adjacent IRWM regions participated in either the 2009 or 2011 Region Acceptance Process and all have been approved. The regions adjacent to the East Stanislaus Region are described herein.

Eastern San Joaquin Region: The Eastern San Joaquin Region shares its southern border with the northern border of the East Stanislaus region. This border is marked by the Stanislaus River and the interface of the Modesto and East San Joaquin groundwater basins. There is no overlap between these two regions.

Merced Region: The Merced IRWM Region includes the eastern portion of the San Joaquin Valley within Merced County and was revised in the 2011 RAP process. The Merced Region defined its northern border as the Merced River watershed boundary while the East Stanislaus Region's southern boundary is defined as the Merced River, Turlock Irrigation District, and the Turlock groundwater basin. Due to the differences in boundary delineations, a slight overlap exists between the Merced Region and East Stanislaus Region. There is an understanding between the East Stanislaus and Merced Regions that cooperation and coordination may be required in the overlap area.

Tuolumne-Stanislaus Region: The Tuolumne-Stanislaus Region's western border is defined as the Tuolumne County line. The interface between the Tuolumne-Stanislaus and East Stanislaus

This Coordination Plan Standards includes:

- Identification of a process to coordinate water management projects and activities of participating local agencies & stakeholders to avoid conflicts and take advantage of efficiencies.
- Identification of other neighboring IRWM efforts and the way cooperation/coordination will be accomplished.
- A discussion of any ongoing water management conflicts with adjacent IRWM efforts.
- Identification of areas where a State agency or other agencies may be able to assist in communication, cooperation or implementation of IRWMP components, processes, or projects, or where State or federal regulatory decisions are required before implementing the projects.

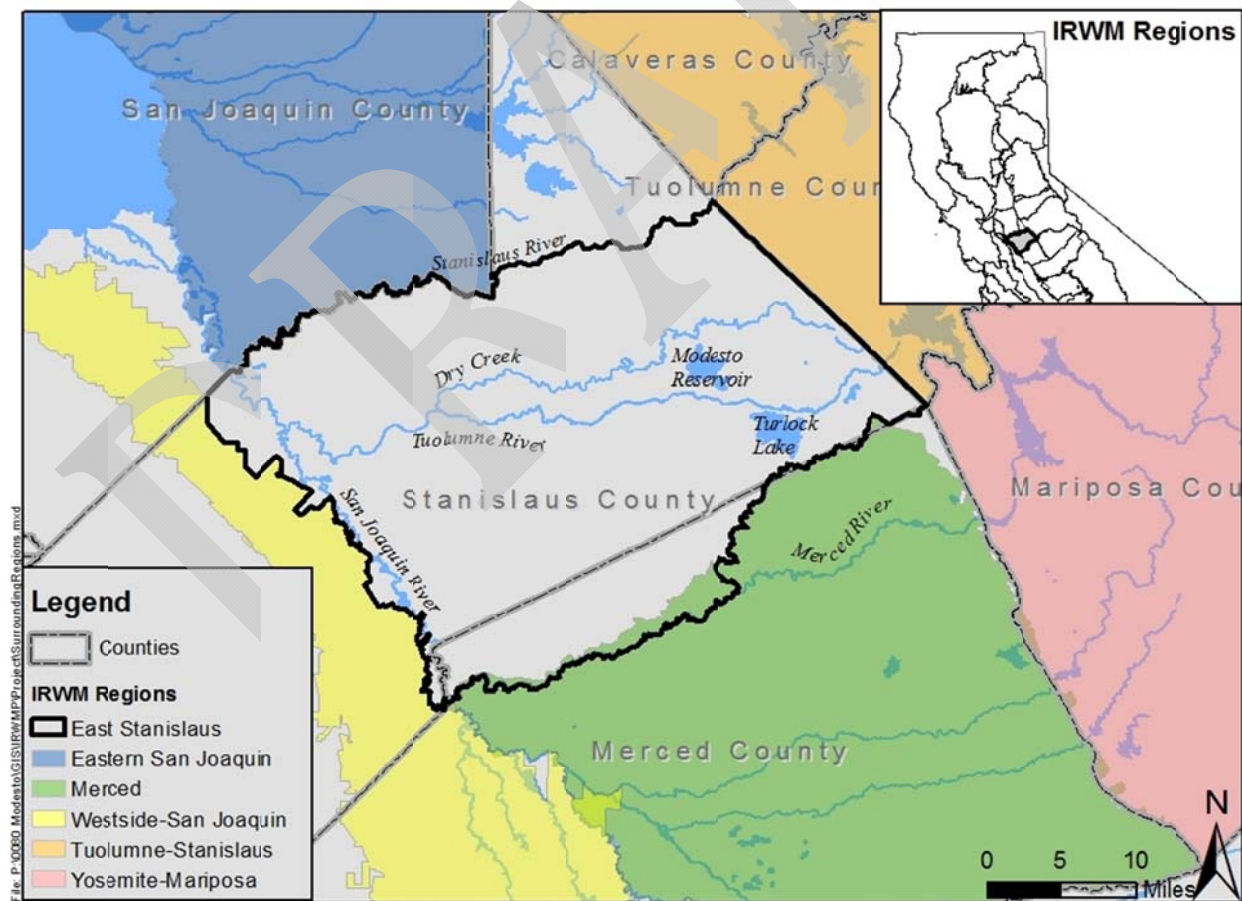
- Proposition 84 & 1E IRWM Guidelines, August 2010, Page 24

Regions is the border of Stanislaus and Tuolumne Counties. There is no overlap between these two regions.

Westside-San Joaquin: The Westside-San Joaquin Region's eastern boundary is adjacent to the East Stanislaus Region's western boundary. This boundary was defined by the Westside-San Joaquin Region using the San Joaquin River; however, the boundary does not strictly follow the river. The western boundary of the East Stanislaus Region simply follows the boundary as defined by the Westside-San Joaquin Region, such that there is no overlap.

As shown in Figure 4-4, the East Stanislaus Region shares borders with the Eastern San Joaquin Region, the Westside-San Joaquin Region, the Merced Region, and the Tuolumne-Stanislaus Region, and is adjacent to the Yosemite-Mariposa Region. When the East Stanislaus regional boundaries were being developed in 2010, the Yosemite-Mariposa Region (formerly the Central California Region) overlapped with the Merced Region and shared boundaries with the East Stanislaus Region. Because of the major overlap the Yosemite-Mariposa and Merced Regions were only conditionally approved by DWR. The Yosemite-Mariposa boundaries were modified during the 2010 RAP to eliminate its overlap with the Merced Region, while the Merced regional boundaries remained unchanged. The East Stanislaus therefore has a small overlap with the Merced Region, but avoids overlaps with all other surrounding IRWM regions.

Figure 4-4: Surrounding IRWM Regions



As previously noted, the East Stanislaus Region was developed to fill in the obvious void in IRWM coverage in the Central Valley. When determining the boundaries for the Region, however, natural water boundaries were also important so that the Region would make sense from a watershed perspective, given the region's use of surface water as part of its supply and distinct features. This criterion resulted in a triangular area in the north-eastern portion of Stanislaus County being left uncovered by the East Stanislaus Region. This area is not in the Modesto groundwater basin, which was used to determine the northern boundary, and its surface water drains into the East San Joaquin Region. This area overlies the Eastern San Joaquin groundwater basin, an area mostly covered by the Eastern San Joaquin IRWM Region. The East Stanislaus Region plans to discuss the triangular gap with the bordering Eastern San Joaquin Region and the Tuolumne-Stanislaus Region to ensure that stakeholders in that area are not neglected.

The East Stanislaus Region has begun coordinating with surrounding regions. The ESRWMP has an ongoing relationship with members of the Westside-San Joaquin IRWM Region in which members of the ESRWMP have attended meetings with the Westside-San Joaquin Region and participated in the planning process. The Tuolumne-Stanislaus and the East Stanislaus Regions have established an interim coordination and communication protocol. Because development of the East Stanislaus Region is relatively new, relationships with other IRWM regions are in initial stages or have not yet materialized. The ESRWMP plans to discuss water management strategies that have or will be employed by each of the neighboring IRWM Regions to identify opportunities for inter-regional collaboration and to optimize management strategies.

4.5 Coordination with State/Federal Agencies

The governance structure allows for any interested party to participate in the East Stanislaus IRWM planning process including members from State and federal agencies in the same manner as any other regional stakeholder. The other opportunity for the East Stanislaus Region to interface with State and federal agencies is through funding secured from State and federal agencies, as well as during permit acquisition for specific projects in the IRWMP and preparation of environmental documentation. If funding were secured from a State or federal agency to implement projects included in the IRWMP, on-going coordination would be required during project implementation and after. Similarly, projects that are implemented will require certain State and federal approvals including various permits and/or environmental approvals. Projects will be compliant with the California Environmental Quality Act (CEQA) and the National Environmental Protection Act (NEPA), as necessary. Completion of CEQA/NEPA documentation would require coordination with various State and federal agencies.

At present, the East Stanislaus Region is coordinating indirectly with the Department of Water Resources. This coordination is occurring through both the IRWM process and through the Regional Flood Management program.